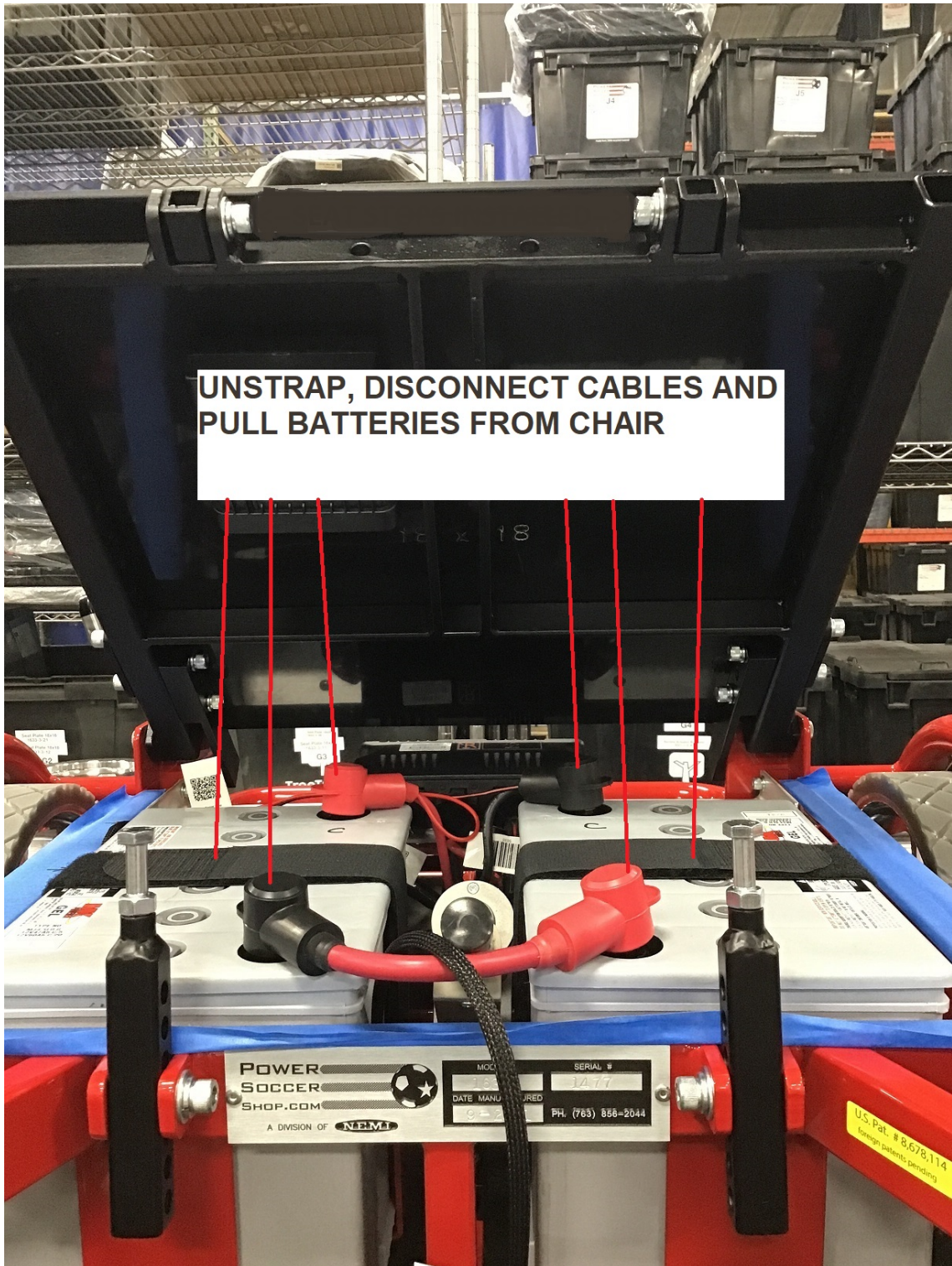


REPLACING BATTERIES ON STRIKE FORCE CHAIR

1. POWER DOWN CHAIR
2. TILT SEAT BACK AS FAR AS IT WILL GO



3. UNSTRAP AND DISCONNECT CABLES FROM BATTERIES



4. PULL BATTERIES OUT OF CHAIR
5. DROP NEW BATTERIES INTO CHAIR
6. STRAP BATTERIES INTO CHAIR
7. CONNECT BATTERY CABLES
8. TILT SEAT BACK DOWN INTO NORMAL USE POSITION
9. BATTERY INSTALLATION IS COMPLETE