



## INSTRUCTIONS FOR CONNECTING QUICK CHARGE CONNECTORS (PN5039)

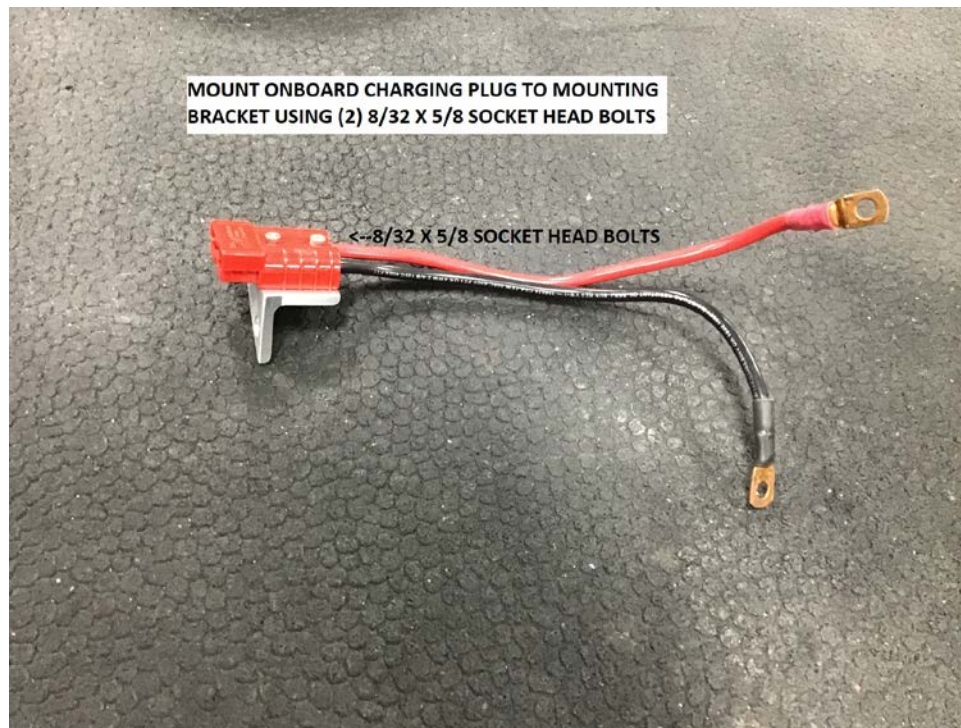
### QUICK CHARGE CONNECTORS

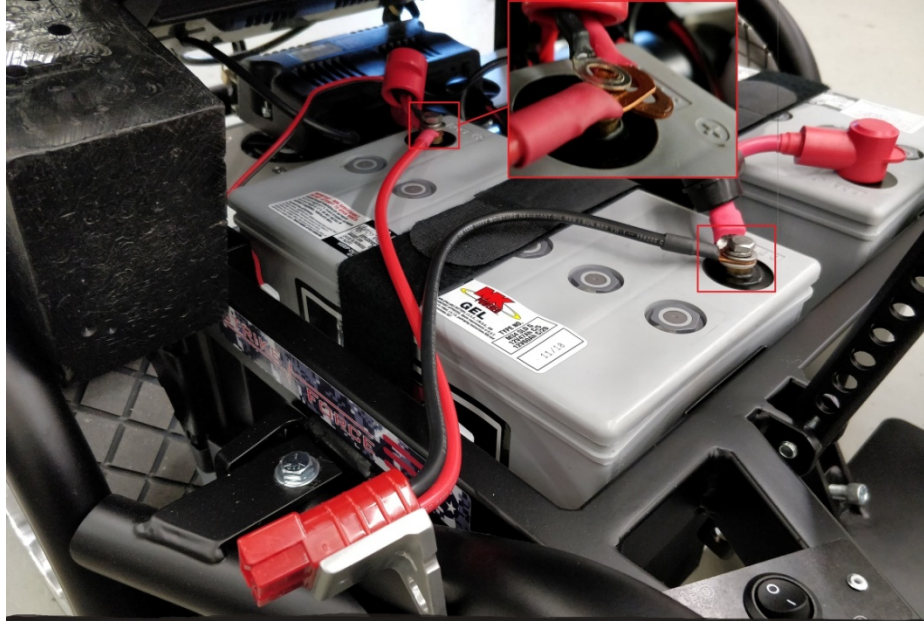


### ONBOARD BATTERY CHARGING PLUGS



1. TO USE THESE QUICK CHARGE CONNECTORS THE ONBOARD BATTERY CHARGING PLUGS (PN5037) NEED TO BE INSTALLED.
2. MOUNT ONBOARD CHARGING PLUGS TO MOUNTING BRACKETS USING (4) 8/32 X 5/8 SOCKET HEAD BOLTS.
3. TO INSTALL THE ONBOARD CHARGING PLUGS ATTACH THE RED WIRE TO THE POSITIVE POST OF THE BATTERY AND THE BLACK WIRE TO THE NEGATIVE POST OF THE BATTERY. MAKE SURE THE NUTS HOLDING THE WIRES ARE TIGHT AND SECURE. THERE IS ONE PLUG PER BATTERY.
4. MOUNT ONBOARD CHARGE PLUGS TO SEAT RAILS USING (2) 5/16-24 X 1 ¼ SOCKET HEAD BOLTS. MOUNT ONE PLUG ON EACH SIDE OF SEAT.





CONNECT ONBOARD CHARGING PLUG  
TO BATTERY (1 PLUG PER BATTERY)  
RED WIRE TO POSITIVE POST AND  
BLACK WIRE TO NEGATIVE POST



MOUNT ONBOARD -->  
CHARGING CONNECTOR  
TO SEAT RAIL USING (1)  
5/16-24 X 1 1/4 SOCKET  
HEAD BOLT

5. PLUG THE SINGLE CHARGE CONNECTOR INTO THE ONBOARD BATTERY CHARGING PLUG ON THE POWER SOCCER WHEEL CHAIR.
6. PLUG THE DOUBLE CHARGE PLUGS FROM THAT SAME CABLE INTO TWO OF THE BATTERY CHARGER CONNECTORS.
7. REPEAT THIS SAME CONNECTION FOR SECOND BATTERY USING THE TWO BATTERY CHARGER CONNECTORS THAT HAVE NOT BEEN USED YET.
8. APPLY POWER TO CHARGER.
9. POWER DOWN CHARGER AND DISCONNECT FROM BATTERIES WHEN FULLY CHARGED.