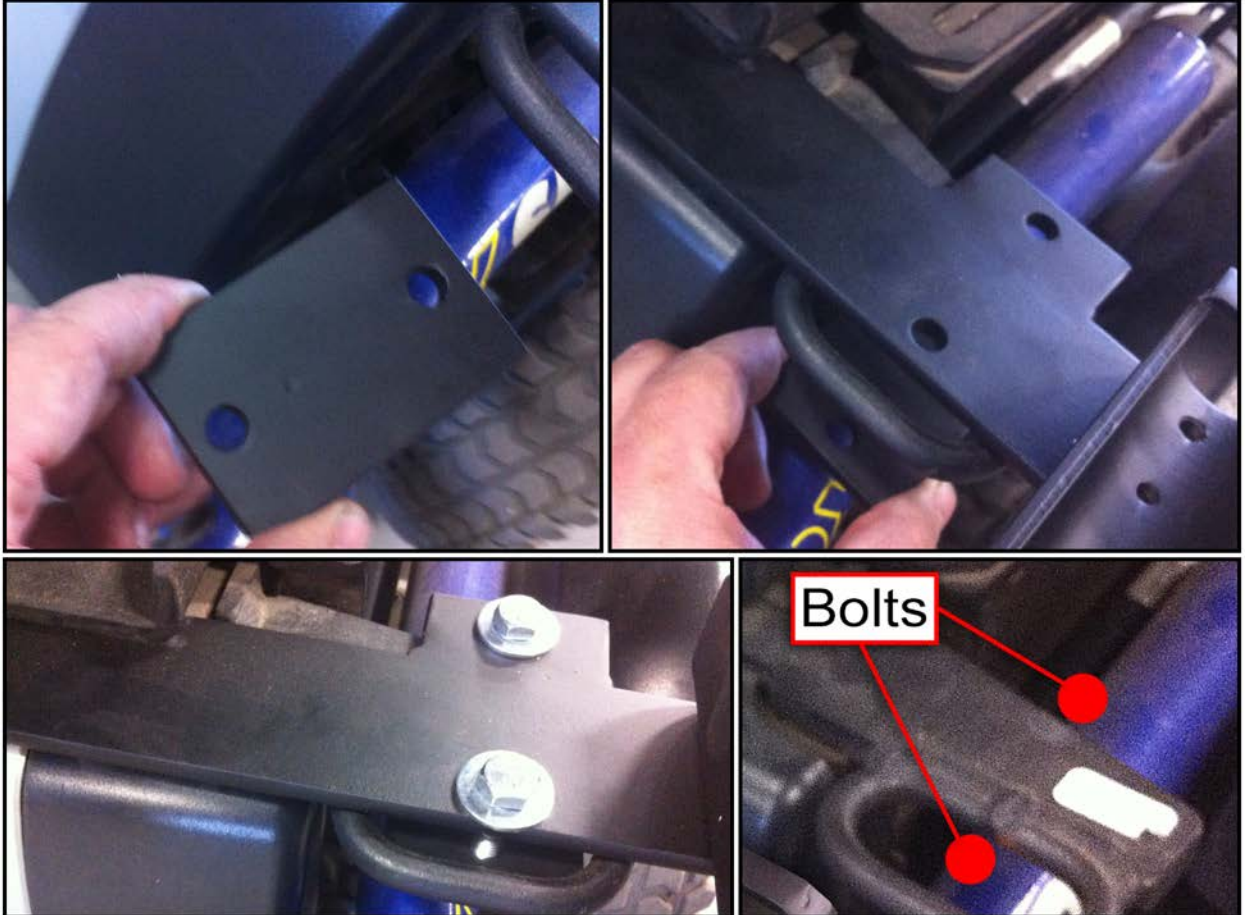


TDX SP & SI Guard Bracket Installation PN 5081

1. The first thing that you will need to do is set the guard bracket on top of the base of the wheelchair and as you can see in the example photos part of the guard will go in between the base of the wheelchair and the seat frame bracket.



2. In the second step you will need to use the two smaller rectangular pieces of metal to secure the guard bracket to the wheelchair, as you can see in the example photos one bolt will be going inside the tie down loop and the other bolt will be outside of the tie down loop more towards the rear of the chair.



3. Lastly, we need to tighten the four bolts, you will need two 1/2" wrenches to do this. Refer to these example photos before you tighten everything down to make sure everything is adjusted correctly.

