



***AeroForce*** *Soccer Guard*

*For*

***Invacare*** *Power Chairs*

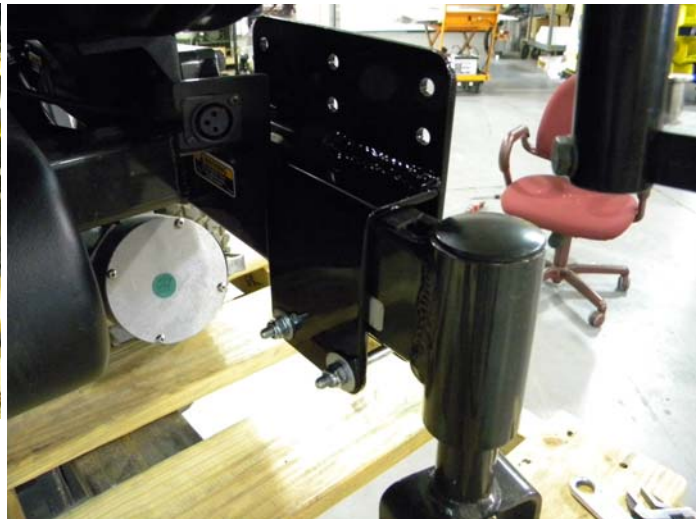
***Quick Start Guide***  
***PN 1524***

Power Soccer Shop, Inc.  
11841 243rd Ave NW  
Zimmerman, MN 55398  
763-856-2044  
*customerservice@powersoccershop.com*

1. Install chair frame mount bracket & bolts on the chair frame as shown in figures "M" and "V".



*Figure "M"*



*Figure "V"*

2. Using a 5/32" Hex wrench, install the guard mounting bracket as shown in figures "J" & "W".



*Figure "J"*



*Figure "W"*

3. Place the guard in the guard mount brackets. Install and secure (2) mounting bolts on each side as shown in figure “K”.



*Figure “K”*



Your new AeroForce Power Soccer guard is now installed and ready for use!